



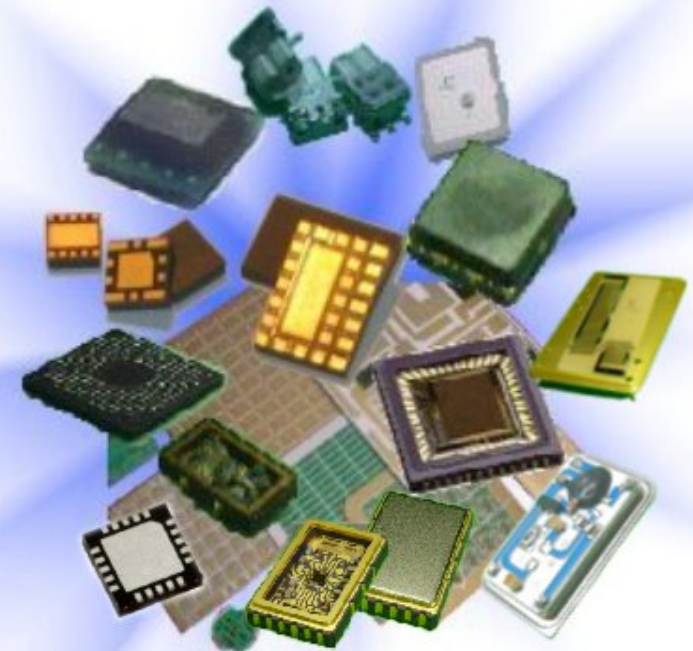
TONG HSING ELECTRONIC INDUSTRIES, LTD.

Tong Hsing

First Quarter 2016

Earnings Conference

Mar 6th, 2016

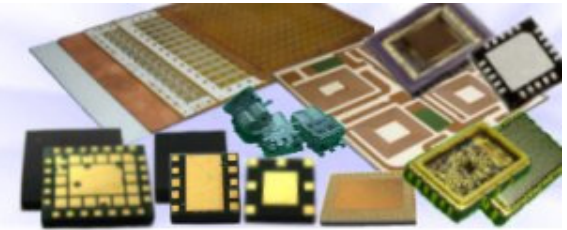


Excellence in Custom Electronics Manufacturing

Company Confidential



Disclaimer

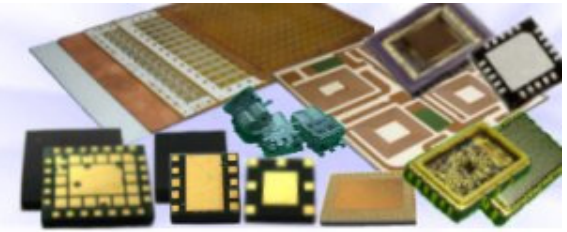


This presentation contains forward-looking statements. These forward-looking statements are subject to risks, uncertainties and assumptions, some of which are beyond our control. Actual results may differ materially from those expressed or implied by these forward-looking statements. Because of these risks, uncertainties and assumptions, the forward-looking events and circumstances discussed in this presentation might not occur in the way we expect, or at all. You should not place undue reliance on any forward-looking information.

In preparing the information herein, Tong Hsing have relied upon and assumed, without independent verification, the accuracy and completeness of all information available from public sources or which was provided to Tong Hsing or which was otherwise reviewed by Tong Hsing. Neither Tong Hsing nor its advisors have made any representation or warranty as to the accuracy or completeness of such information and nor do they assume any undertaking to supplement such information as further information becomes available or in light of changing circumstances. None of Tong Hsing, nor any of their respective affiliates, advisers or representatives shall have any liability whatsoever (in negligence or otherwise) for any loss howsoever arising from any use of this presentation or its contents or otherwise arising in connection with this presentation. Neither this presentation nor any of its contents may be reproduced to a third party without the prior written consent of Tong Hsing.



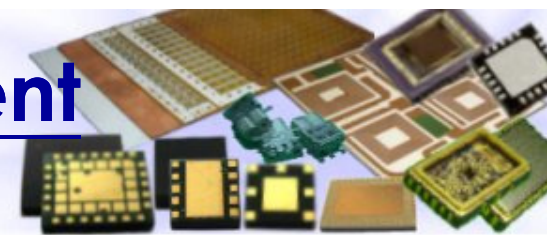
Table of Contents



1. Financial Update
2. Business Update



1Q 16 Income Statement QoQ Comparison



consolidated

Unit: NT\$Thousand

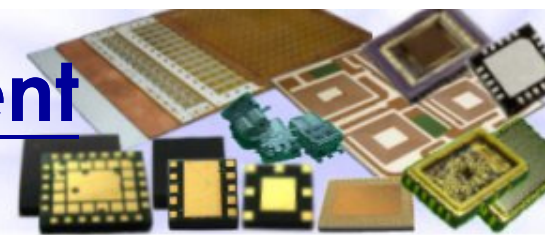
	1Q 2016 (Reviewed)	%	4Q 2015 (Audited)	%	Chg %
Net Revenue	1,916,650	100.0%	1,894,401	100.0%	1.2%
Cost of Sales	1,447,080	75.5%	1,444,283	76.2%	0.2%
Gross Profit	469,570	24.5%	450,118	23.8%	4.3%
Operating Expenses	193,666	10.1%	157,876	8.3%	22.7%
Operating Income	275,904	14.4%	292,242	15.4%	-5.6%
Non-Operating Items	(7,732)	-0.4%	4,708	0.2%	-264.2%
Income before Income Tax	268,172	14.0%	296,950	15.7%	-9.7%
EPS(NT\$) before Tax	1.65		1.82		
Income Tax Expense	42,474	2.2%	46,488	2.5%	-8.6%
Net Income	225,698	11.8%	250,462	13.2%	-9.9%
EPS(NT\$) after Tax	1.39		1.54		

*2016 Weighted Average Outstanding Shares : 162.91Million

Company Confidential



1Q 16 Income Statement YoY Comparison



consolidated

Unit: NT\$Thousand

	1Q 2016 (Reviewed)	%	1Q 2015 (Reviewed)	%	Chg %
Net Revenue	1,916,650	100.0%	1,800,816	100.0%	6.4%
Cost of Sales	1,447,080	75.5%	1,386,030	77.0%	4.4%
Gross Profit	469,570	24.5%	414,786	23.0%	13.2%
Operating Expenses	193,666	10.1%	167,565	9.3%	15.6%
Operating Income	275,904	14.4%	247,221	13.7%	11.6%
Non-Operating Items	(7,732)	-0.4%	(1,278)	-0.1%	505.0%
Income before Income Tax	268,172	14.0%	245,943	13.7%	9.0%
EPS(NT\$) before Tax	1.65		1.51		
Income Tax Expense	42,474	2.2%	36,801	2.0%	15.4%
Net Income	225,698	11.8%	209,142	11.6%	7.9%
EPS(NT\$) after Tax	1.39		1.28		

*2016 Weighted Average Outstanding Shares : 162.91Million

Company Confidential



1Q 16 Operating Results Summary



- consolidated

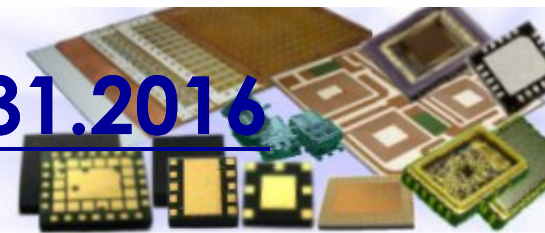
Unit: NT\$Thousand	1Q 2016 (Reviewed)	4Q 2015 (Audited)	1Q 2015 (Reviewed)
Net Revenues	1,916,650	1,894,401	1,800,816
Net Income	225,698	250,462	209,142
EPS(NT\$) before Tax	1.65	1.82	1.51
EPS(NT\$) after Tax	1.39	1.54	1.28
Depreciation	280,746	278,980	262,457
Capital Expenditure*	299,742	243,831	263,918
EBITDA**	565,376	593,026	527,466

*Additions to property, plant and equipment

**EBITDA = Net Income + Interest + Tax + Depreciation & Amortization expenses



Balance Sheet Highlight – 3.31.2016



consolidated

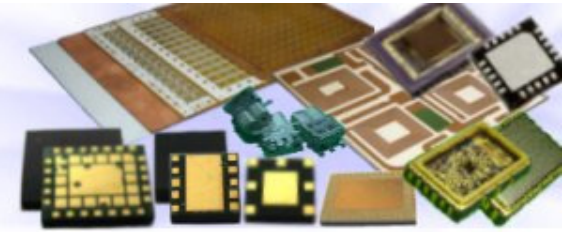
Unit: NT\$thousand	3.31.2016 (Reviewed)	%	3.31.2015 (Reviewed)	%
Cash and Cash Equivalents	7,719,093	49.8%	8,621,174	54.9%
Fixed Assets	5,236,062	33.8%	4,842,956	30.8%
Total Assets	15,495,079	100.0%	15,704,155	100.0%
LT Debt	914,168	5.9%	1,490,036	9.5%
Bonds Payable	1,977,305	12.8%	1,956,169	12.5%
Shareholders' Equity	10,340,273	66.7%	10,222,867	65.1%
Depreciation-YTD	280,746		262,457	
Capital Expenditure-YTD*	299,742		263,918	
EBITDA-YTD**	565,376		527,466	

*Additions to property, plant and equipment

**EBITDA = Net Income + Interest + Tax + Depreciation & Amortization expenses



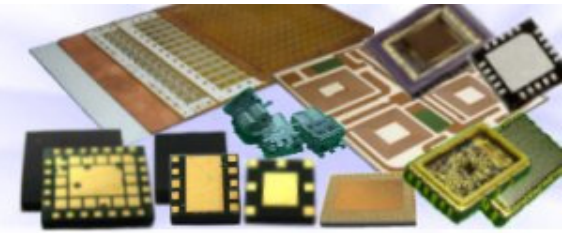
Table of Contents



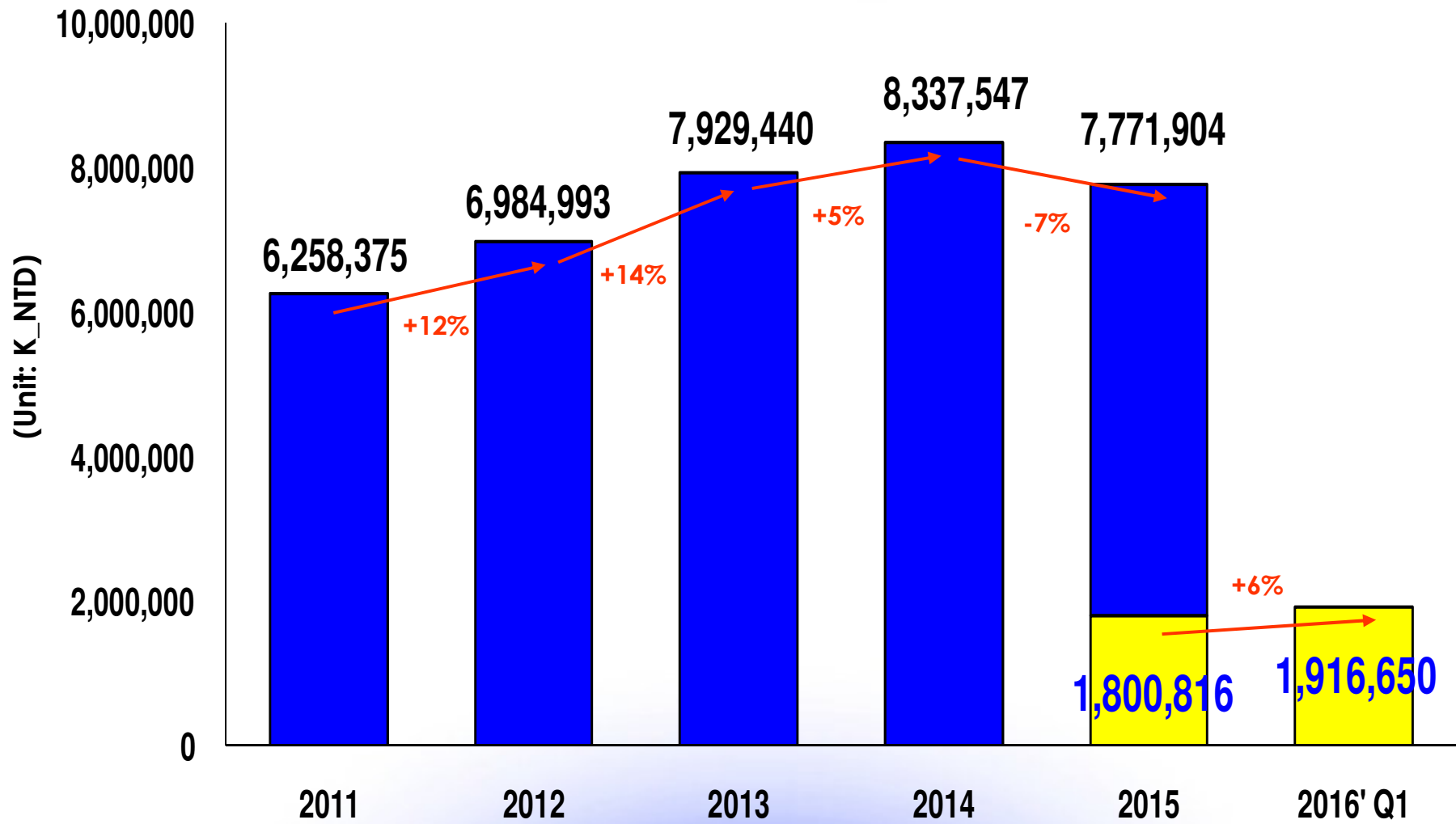
1. Financial Update
2. Business Update



Tong Hsing Revenue History

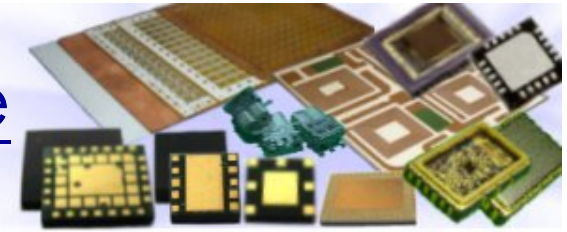


consolidated



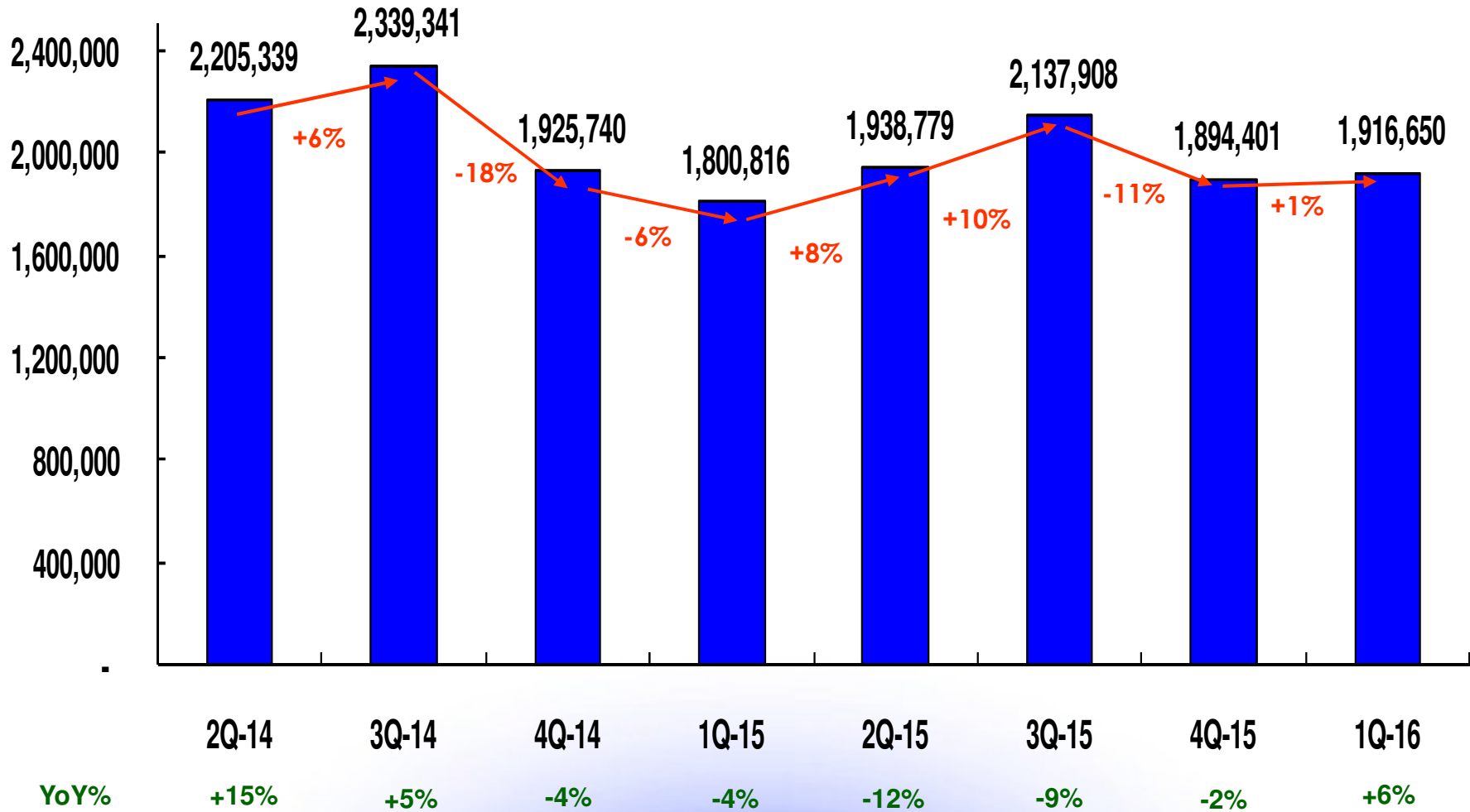


Tong Hsing Quarterly Revenue



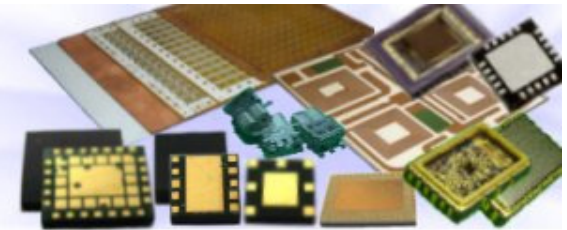
consolidated

Unit:K_NTD

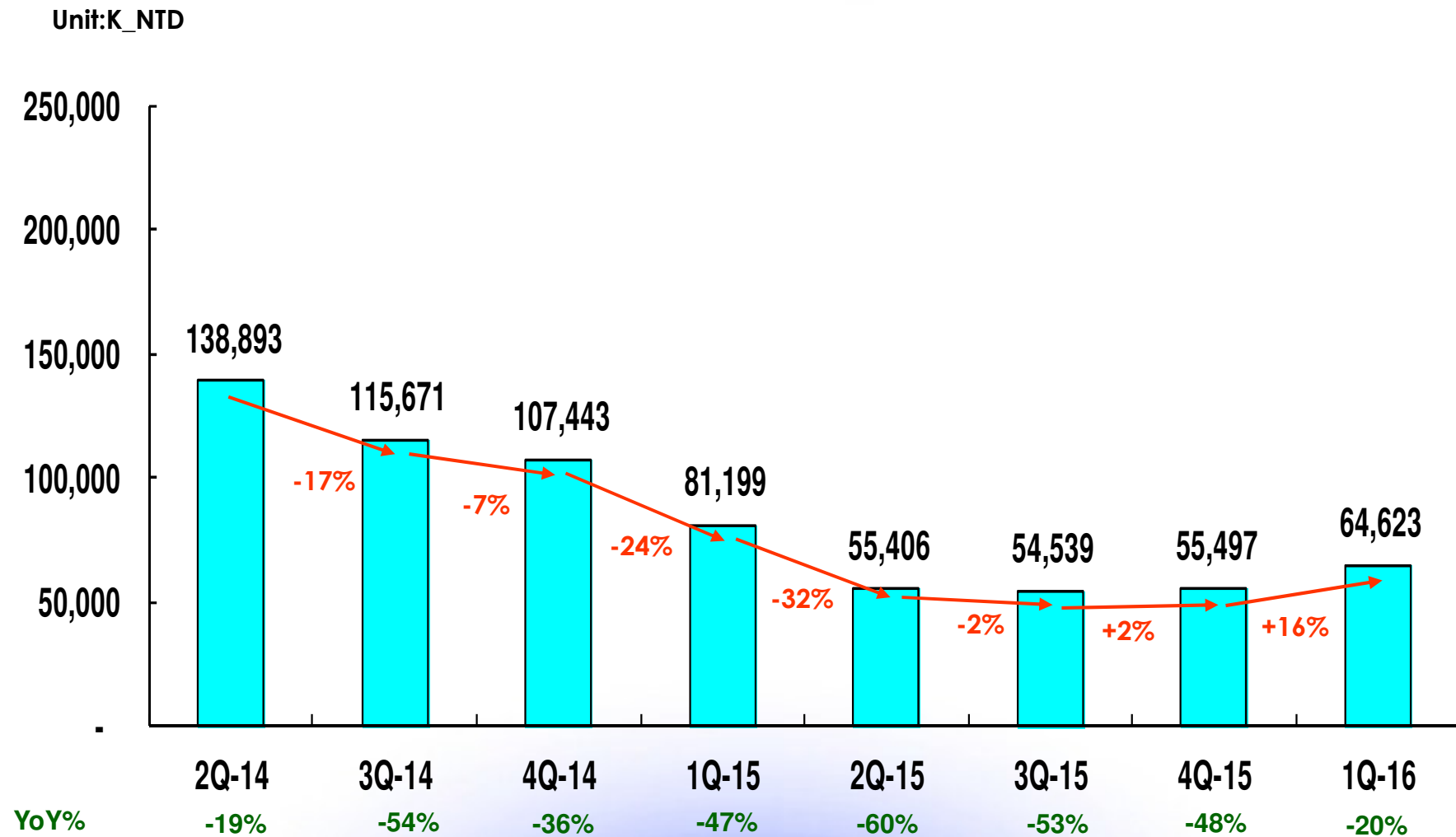




RF Module Quarterly Revenue Trend

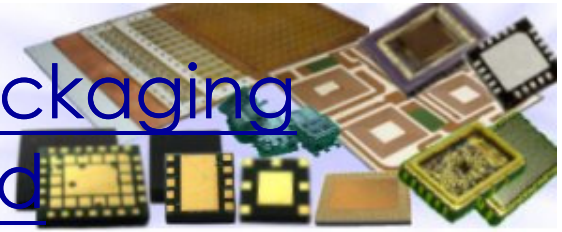


consolidated



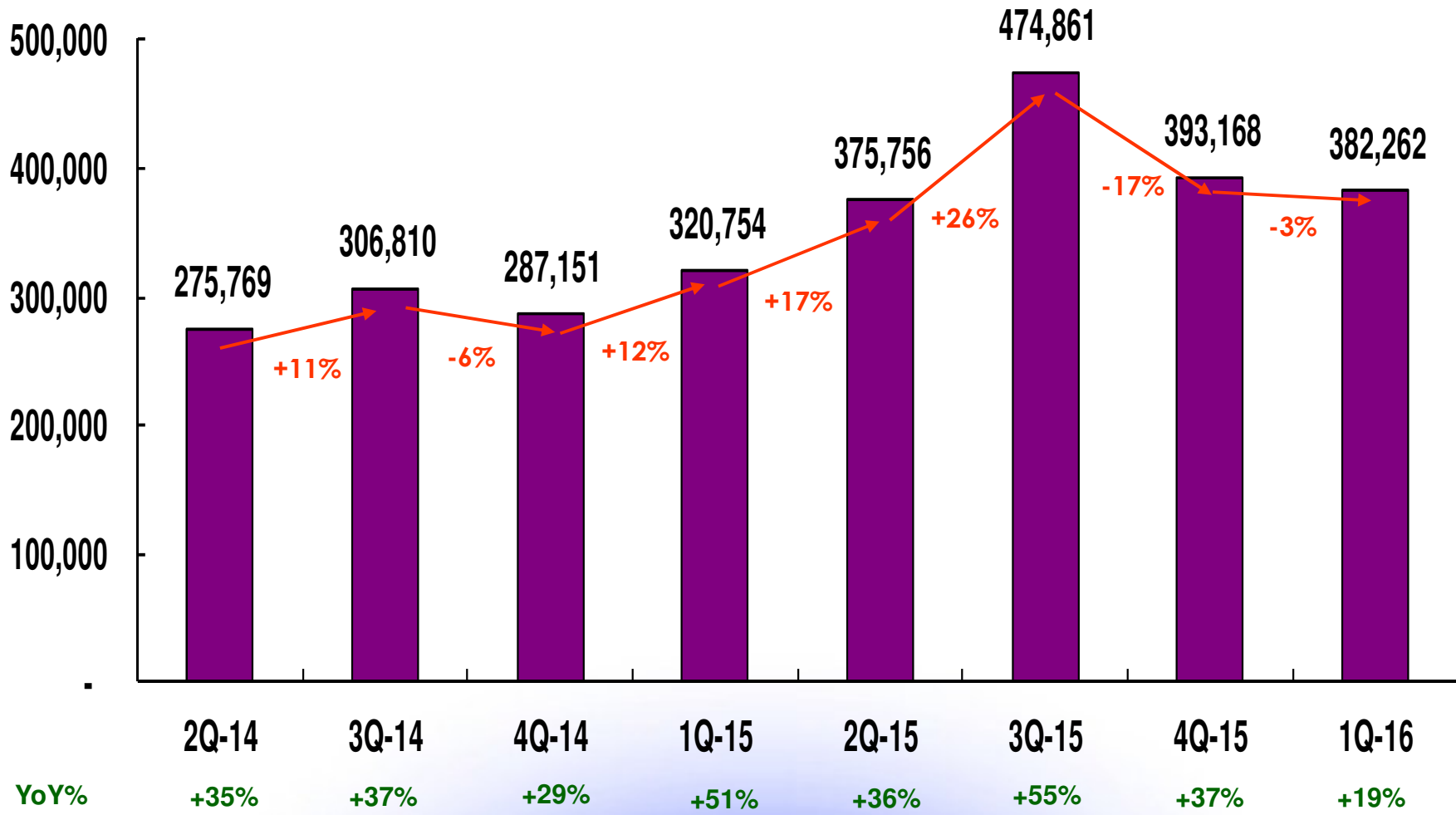


Hybrid Modules & Specialty Packaging Quarterly Revenue Trend



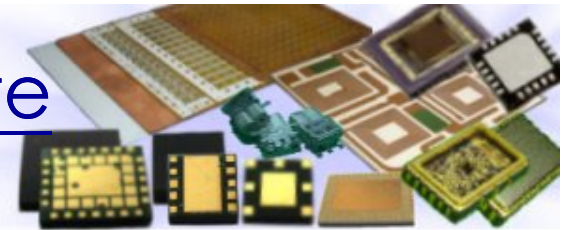
consolidated

Unit:K_NTD





Ceramic Metallized Substrate Quarterly Revenue Trend



consolidated

Unit:K_NTD

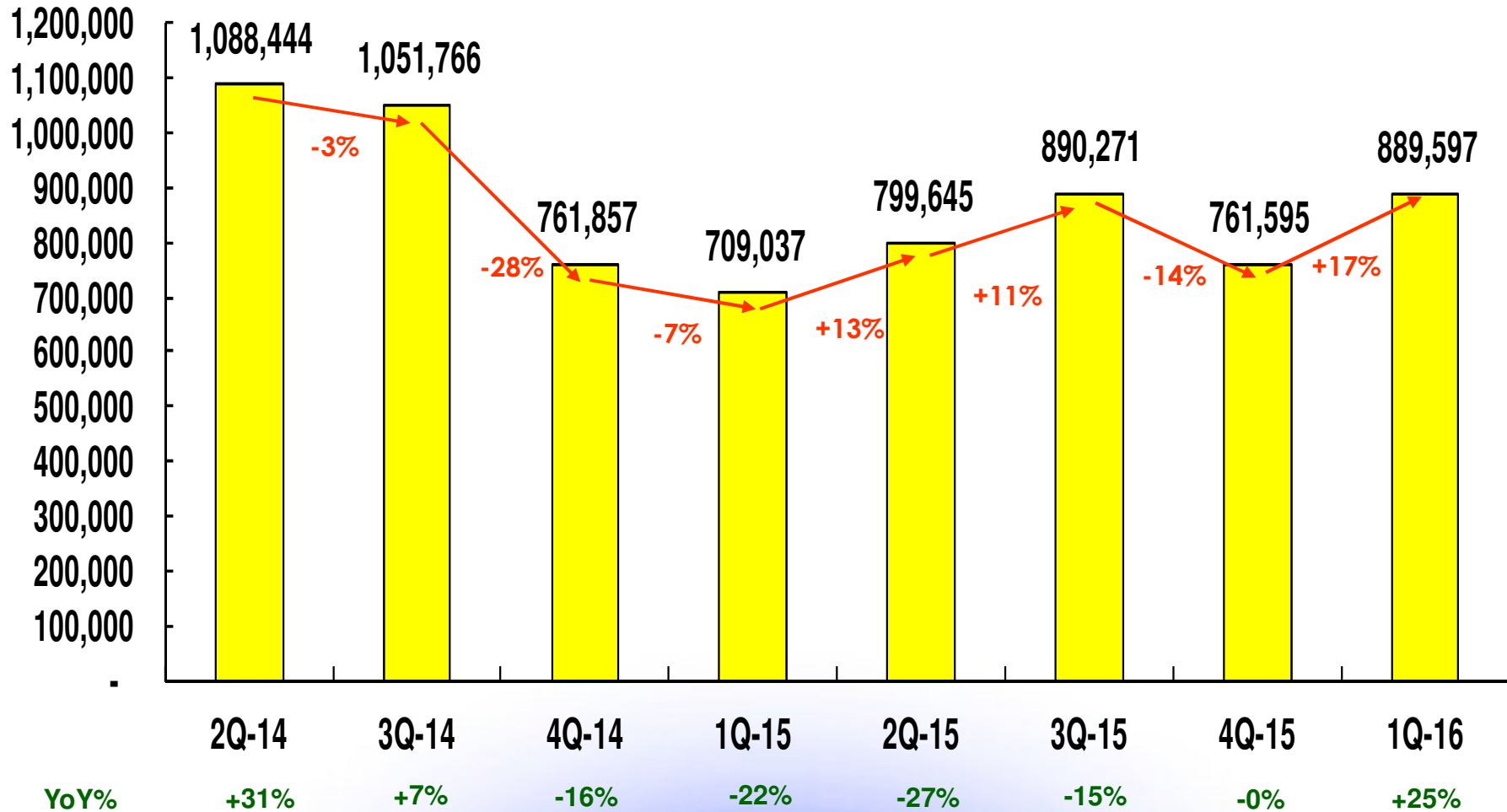
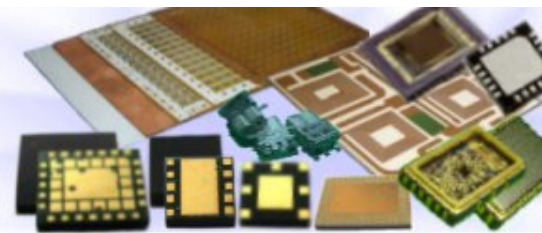


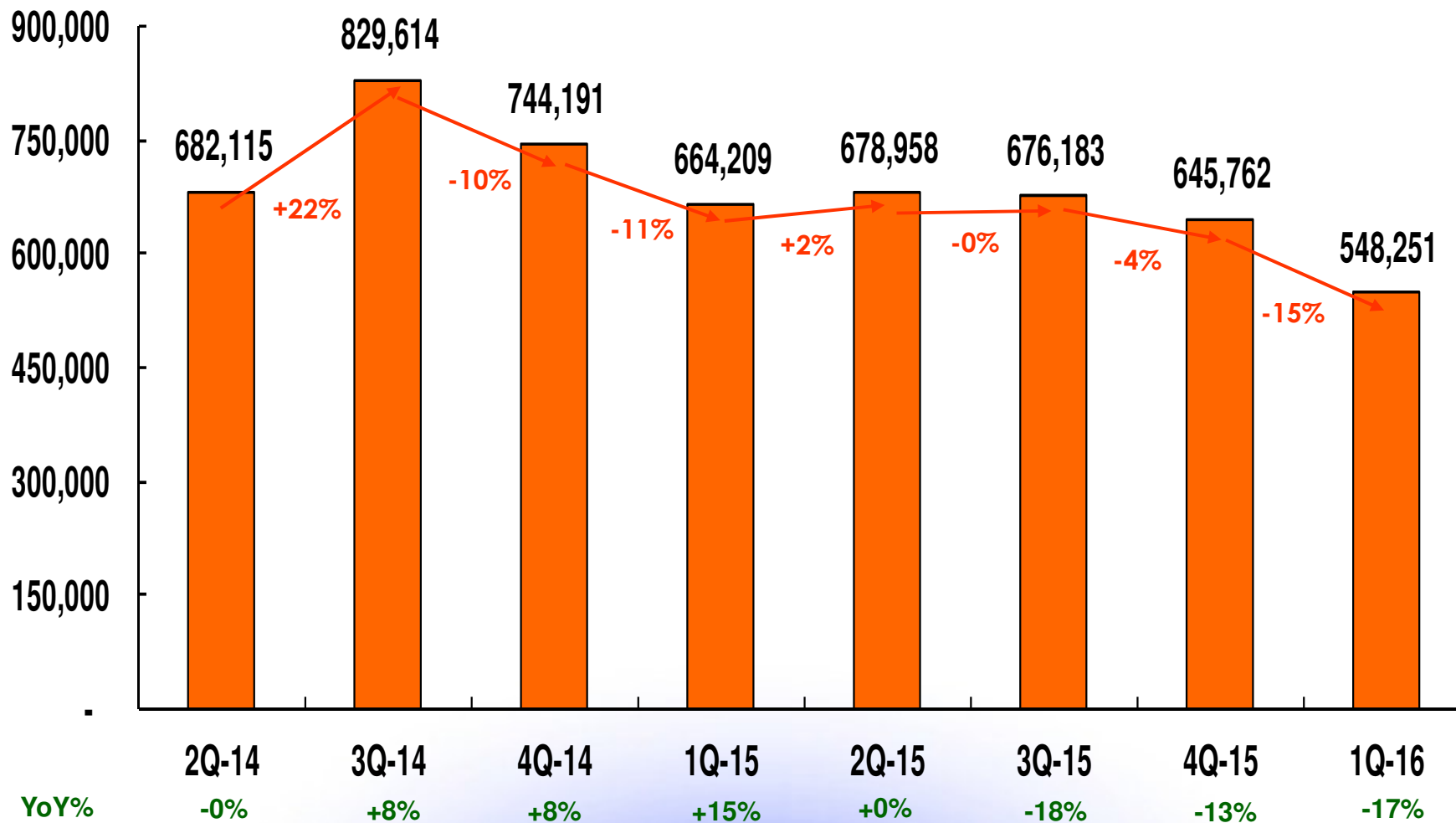


Image Products Quarterly Revenue Trend



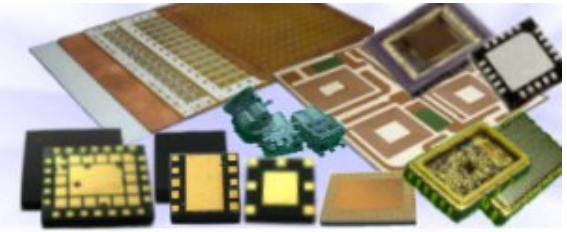
consolidated

Unit:K_NTD



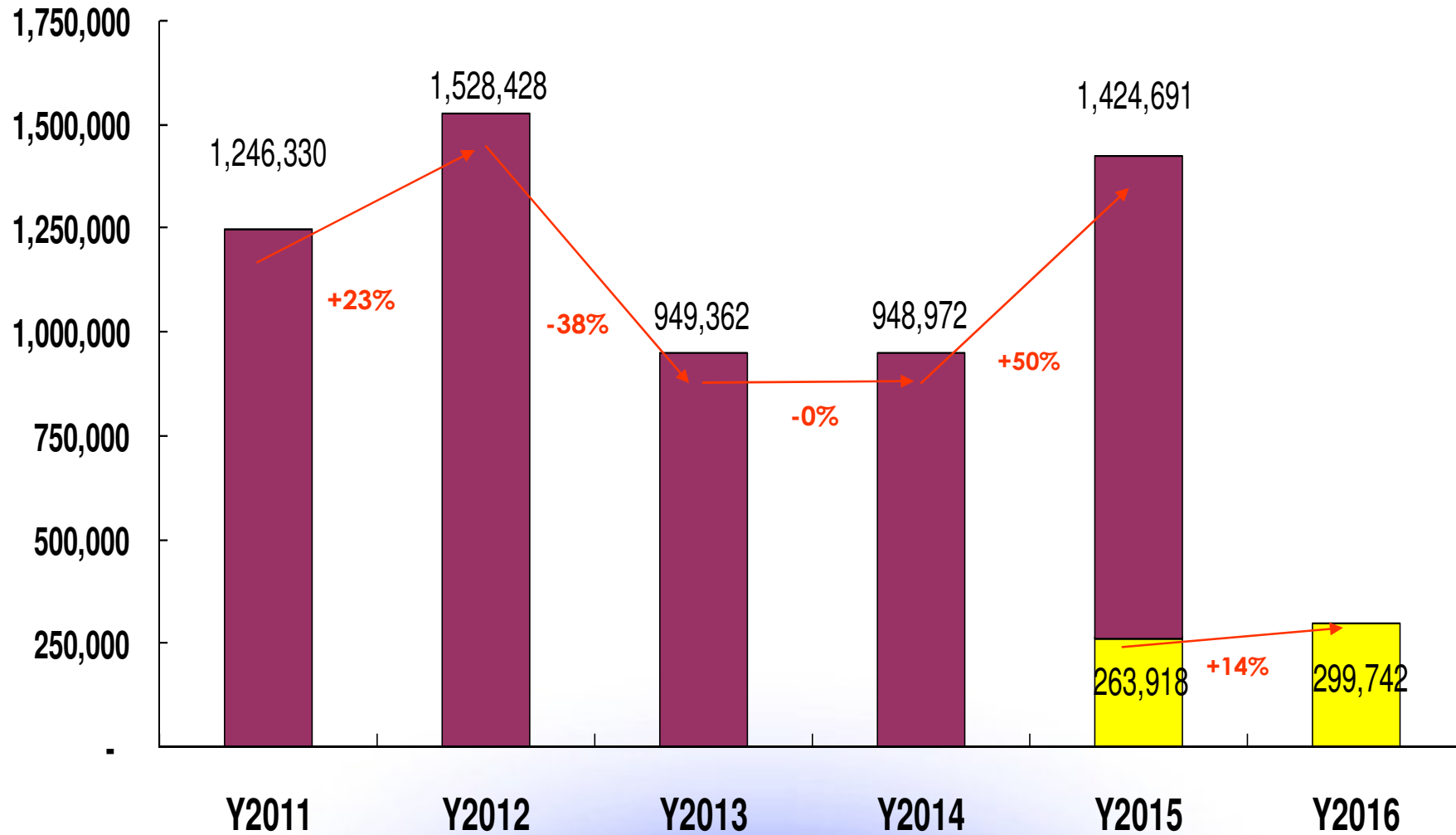


Capital Expenditure



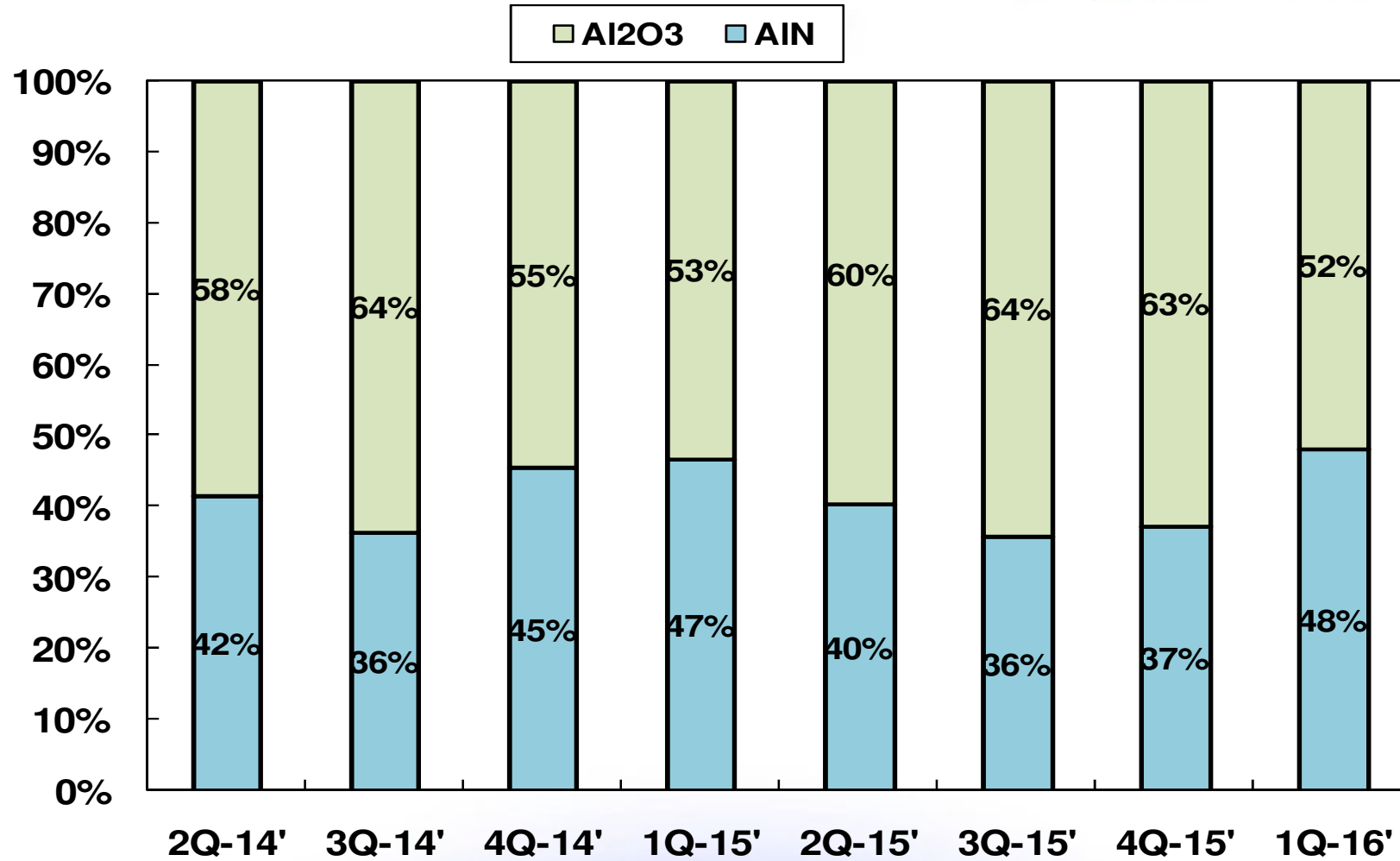
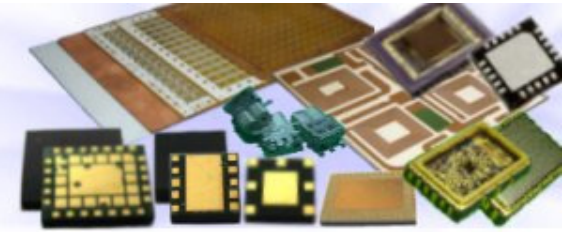
consolidated

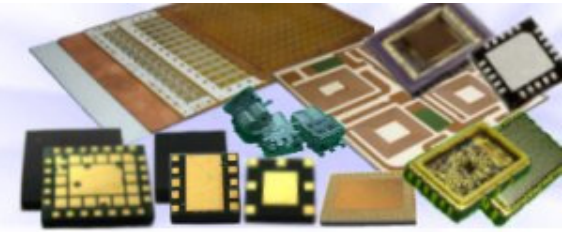
Unit:K_NTD





Al₂O₃ VS AlN





<http://www.theil.com>